

# Arizona Labs Certified for Drinking Water Samples

## Apache County

**Global Environmental Consulting**  
Four Apache County Road 8235  
Concho, AZ  
928-537-7755

## Coconino County

**Nortest Analytical**  
2400 E. Huntington Drive  
Flagstaff, AZ  
928-774-2312

## Maricopa County

**Apex Environmental Laboratory**  
2105 S. 48<sup>th</sup> Street, Ste 102  
Tempe, AZ  
602-437-0762

**Aquatic Consulting & Testing**  
1525 W. University Drive, Ste 106  
Tempe, AZ  
480-921-8044

**Chandler Analytical Laboratories**  
571 N. 54<sup>th</sup> Street  
Chandler, AZ  
480-963-2495

**Legend Technical Services**  
17631 N. 25<sup>th</sup> Avenue, Phoenix, AZ  
602-324-6100

**Statewide Disinfection Services**  
344 S. Hawes Road  
Mesa, AZ  
480-981-8859

**Transwest Analytical Services**  
2525 W. Huntington Drive, Ste 102  
Tempe, AZ  
480-355-0900

**TestAmerica – Cotton Center**  
4625 E. Cotton Center Boulevard, Ste 189  
Phoenix, AZ  
602-437-3340

## Mohave County

**Mohave Environmental Laboratory**  
2850 Landon Drive, Ste A&B  
Bullhead City, AZ  
928-754-8101

## Navajo County

**Mohave Environmental Laboratory**  
200 N. 2<sup>nd</sup> Street Holbrook, AZ  
928-524-4635

## Pima County

**Complete Analytical Services**  
4455 S. Park Avenue, Ste 110  
Tucson, AZ  
520-884-5811

**Legend Technical Services**  
4585 S. Palo Verde  
Tucson, AZ  
520-327-1234

**Turner Laboratories, Inc**  
2445 N. Coyote Drive, Ste 104  
Tucson, AZ  
520-882-5880

## Yuma County

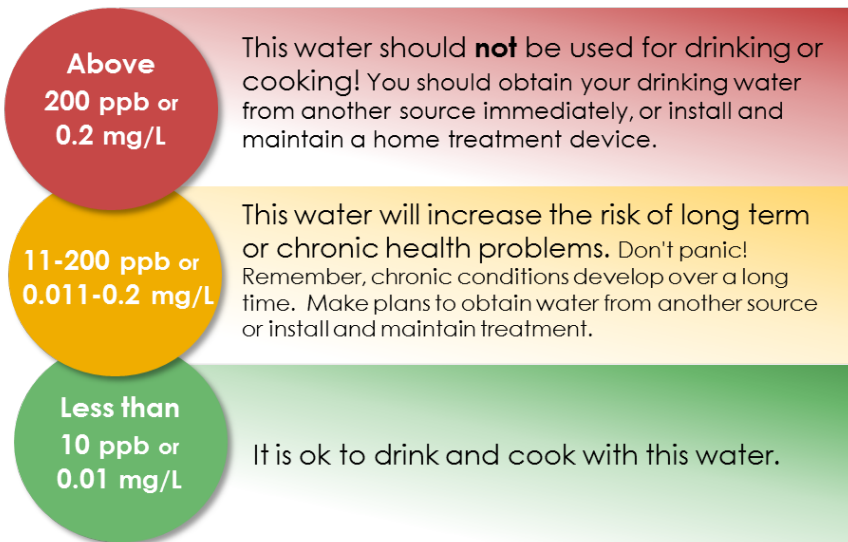
**Agri-Trend Lab & Consulting**  
3337 33rd Place Yuma, AZ  
928-317-1127

**Fresh Terra Services**  
1929 South Arizona Avenue  
Yuma, AZ  
928-257-3601

## How much arsenic is too much arsenic?

Arizona Department of Health Services has developed a simple method to determine if arsenic levels are too high by using the color code below.

\* **ppb** is parts per billion and **mg/L** is milligrams per liter.



## Recommended Well Testing Schedule

All New Wells	Once a Year	Every 5 Years
<ul style="list-style-type: none"> <li>• Arsenic</li> <li>• Bacteria (total coliform)</li> <li>• Fluoride</li> <li>• Lead</li> <li>• Nitrates</li> <li>• Total dissolved solids</li> <li>• Uranium</li> </ul>	<ul style="list-style-type: none"> <li>• Bacteria: (total coliform)</li> <li>• Nitrates</li> </ul>	<ul style="list-style-type: none"> <li>• Arsenic</li> <li>• Fluoride</li> <li>• Uranium</li> </ul>

### In addition to the schedule above, have your well tested if:

- There are known problems with well water in your area
- You have experienced problems near your well (flooding, wildfire, land disturbances)
- You notice a change in water quality (taste, color, odor)
- Anyone in your family has an unexplained illness

